

**PACKAGING
FOR WINE**



The packaging is designed for wine bottles. It consists of two parts that fold into each other, no need to glue anything.

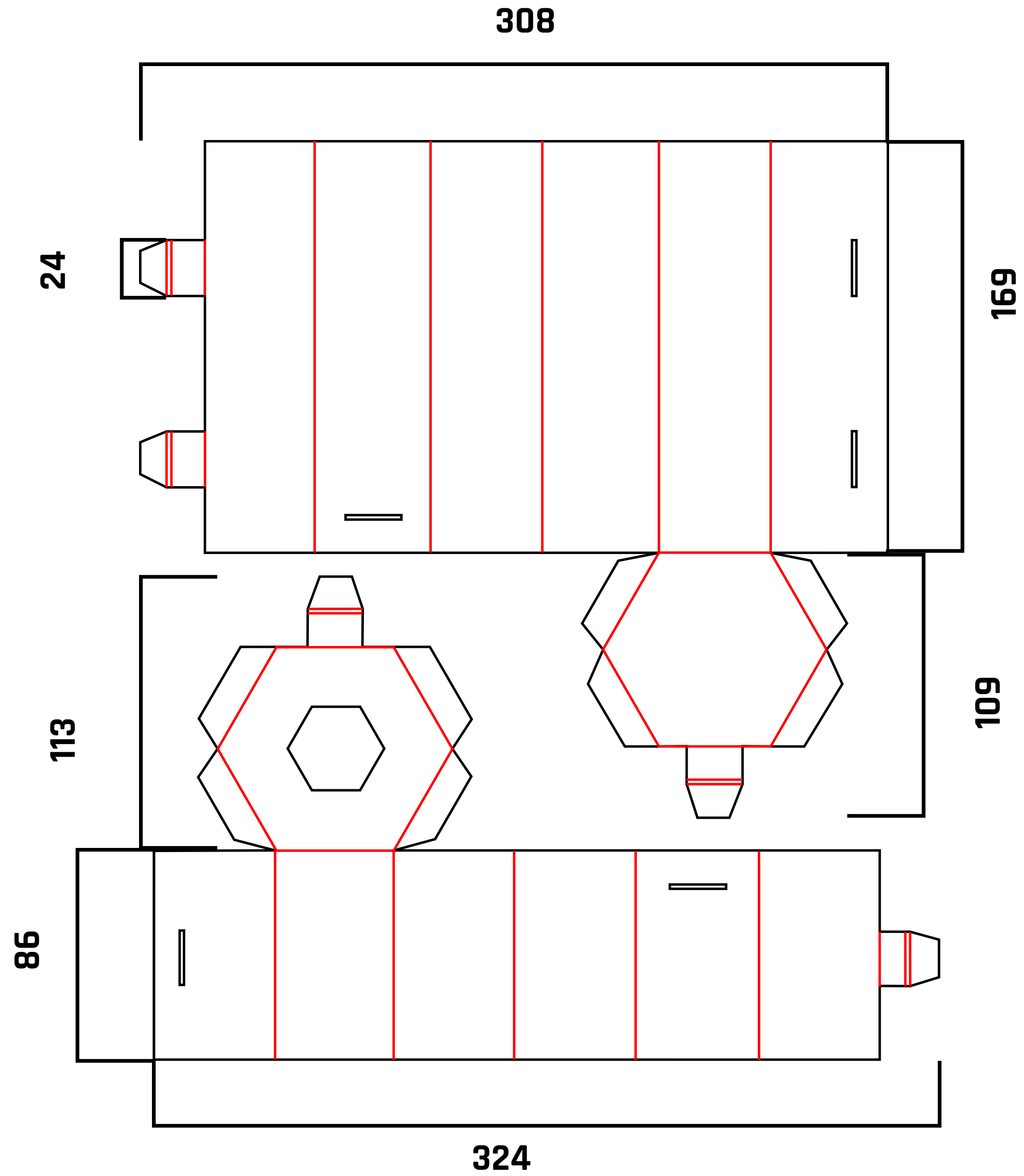
The packaging is mainly used for transport in a box so that the wines do not rub against each other.

This packaging is also displayed in the store. The neck of the wine is exposed. The customer takes the wine from the store for the neck of the wine.



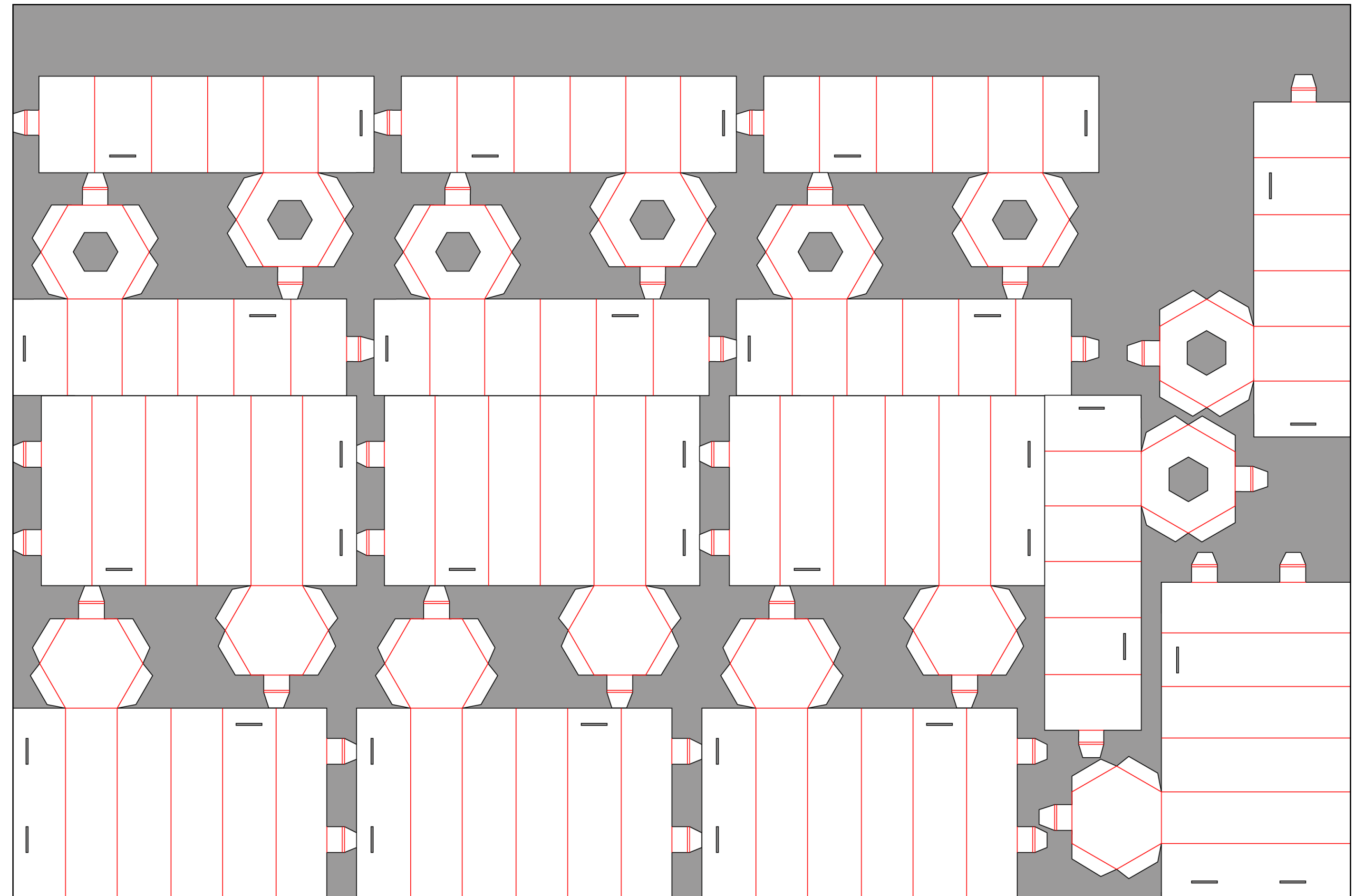
NET DIMENSIONS

Scale: mm
black line-cuts
red line- bigging



Nets on cardboard format 1200x800 mm

Seven lower parts and eight upper parts can be cut to this format.



1200 mm

800 mm

