

**DESIGN**

**P**

**R**

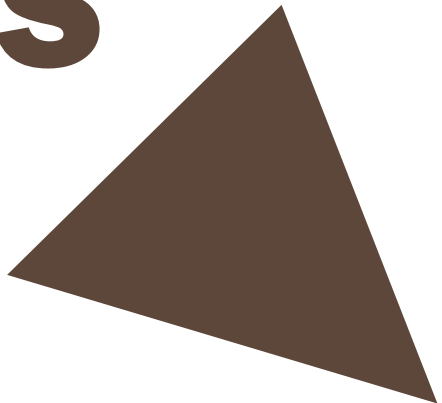
**O**

**C**

**E**

**S**

**S**



# **Coffee Machine Workshop with Aleks Tatic**

*Author Klára Kiesewetterová*

# Themes and users

# target group



shared  
places

*Extra about the target group:*

*Different people, which share coffee machine in shared places – Airbnb accommodation, student dormitories, student design studios. People usually use the machine for a short time, very quickly, during breaks.*

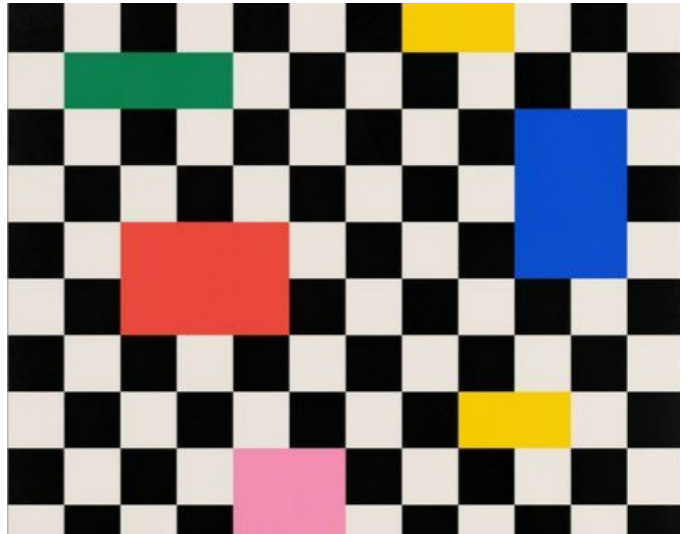


# design theme



*Extra about the design theme:*

*Design with easy shapes for quickly cleaning, because shared appliance usually, no one cleans it and it's always dirty. Coffee machine should communicate with users by funny gutty design with emotions.*



**Themes  
and  
users**